

## Aflatoxin Analysis

# AflaCLEAN Select

## Immunoaffinity Columns for Sample Clean-up

**Best Price !**

### Reliable Sample Preparation

The LCTech immunoaffinity column AflaCLEAN Select has been developed for the clean-up of food and feed samples for subsequent aflatoxin analysis via HPLC.

It is available as 1 mL and 3 mL version.

The maximum loading capacity is 200 ng aflatoxin B1. It shows selectivity against the aflatoxins B1, B2, G1 and G2 .

The chromatographical results are excellent with high recoveries and without disturbing matrix effects.

The columns work well even with challenging samples and are applied for a broad range of matrices, e.g peanuts, pistachios, maize, rice, ...

### Certified Quality

LCTech meets quality demands of international directives on a consistently high level and extensively controls all production steps.

A comprehensive quality control certificate is added to each package.

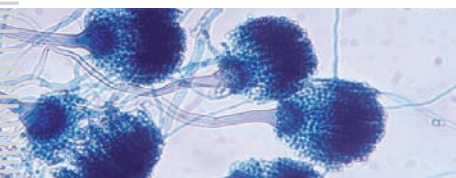


### Easy Handling

Manuals for the clean-up of diverse matrices are additionally available.

In case you wish to clean up larger volumes LCTech offers special sample reservoirs.

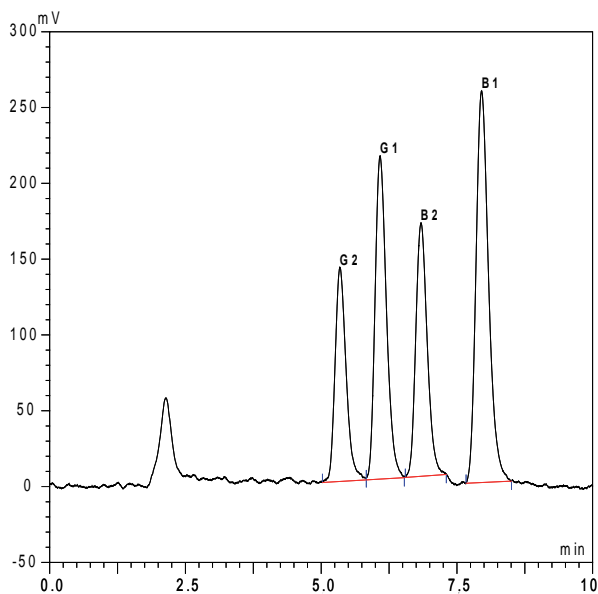
For products concerning easier handling or automation please contact LCTech.



### AflaCLEAN Select at a Glance

- ✓ Excellent recoveries
- ✓ Tested for a broad range of matrixes
- ✓ Certified lots
- ✓ Tested quality
- ✓ Extraction and using information added to each package





Recoveries (%) of aflatoxins in several matrices, cleaned up with LCTech immunoaffinity column AflaCLEAN Select and analyzed by HPLC/FLD and post-column derivatization with LCTech UVE™ Spiked with 10 ppb total aflatoxin

Matrix	B1	B2	G1	G2
Peanuts	94	95	92	87
Pistachios	94	93	95	91
Corn	91	91	95	85
Sunflower seeds	93	94	93	88

- ▲ Analysis with LCTech immunoaffinity column AflaCLEAN Select shows excellent recoveries
- ◀ Chromatographic results are without any matrix interferences and thus easy to interpret afterwards

LCTech checks each lot in-house for functionality and documents the results with a quality certificate.



**Support in every aspect**

We run our own laboratory for all applications and maintain close contact with our customers.

This contributed to our extensive experience in the field of mycotoxin analysis.

We will be pleased to support all your enquiries and requests - whether this method introduction, an unusual matrix or anything else.

Feel free to contact us.

**Ordering Information**

Product number	Description
12058	<b>AflaCLEAN Select, 3 mL, 25 pcs / package</b> <b>Immunoaffinity column for aflatoxins B1, B2, G1 and G2</b>
12059	<b>AflaCLEAN Select, 3 mL, 500 pcs / package</b>
12062	<b>AflaCLEAN Select, 1 mL, 25 pcs / package</b>
12323	<b>AflaCLEAN Select, 1 mL, 100 pcs / package</b>
12063	<b>AflaCLEAN Select, 1 mL, 500 pcs / package</b>
10519	<b>UVE™, photochemical derivatization module for aflatoxin analysis</b>

For further products concerning mycotoxin analysis please visit [www.Lctech.de/](http://www.Lctech.de/)



LCTech GmbH  
 Bahnweg 41  
 84405 Dorfen, Germany  
 Tel. +49 (0)8081 / 9368-0  
 Fax +49 (0)8081 / 9368-10  
 info@LCTech.de

Your direct contact concerning applications:



Dr. Uwe Aulwurm,  
 Head of Applications  
 Tel. +49 (0)8081 / 9368-82  
 mycotoxins@LCTech.de

Visit us at [www.LCTech.de/](http://www.LCTech.de/)!

LCTech GmbH is based in Dorfen, Germany, and develops and distributes innovative products and methods for the preparation and analysis of food, feed and environmental samples.

Worldwide LCTech is represented by a well-developed distributor network.